



Company profile

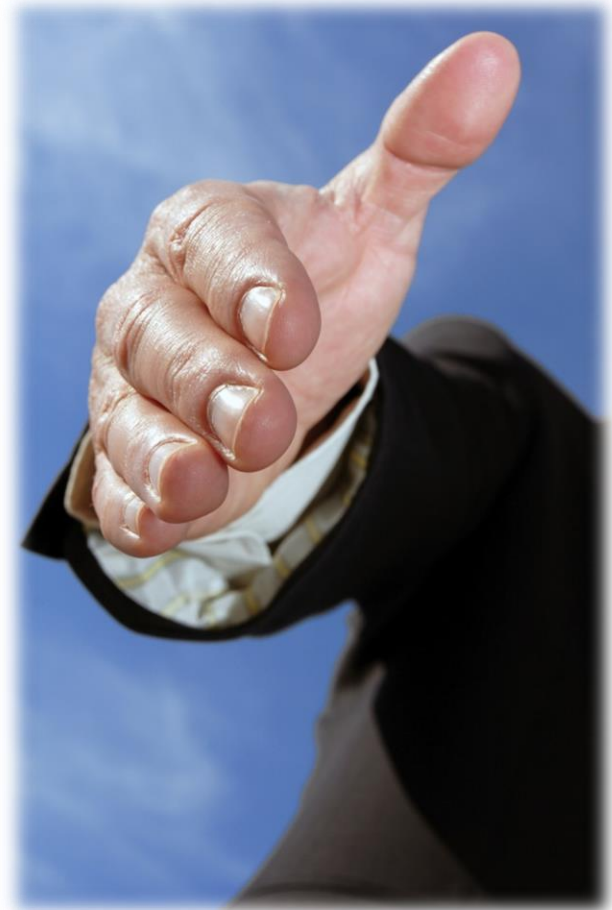
2023.APR

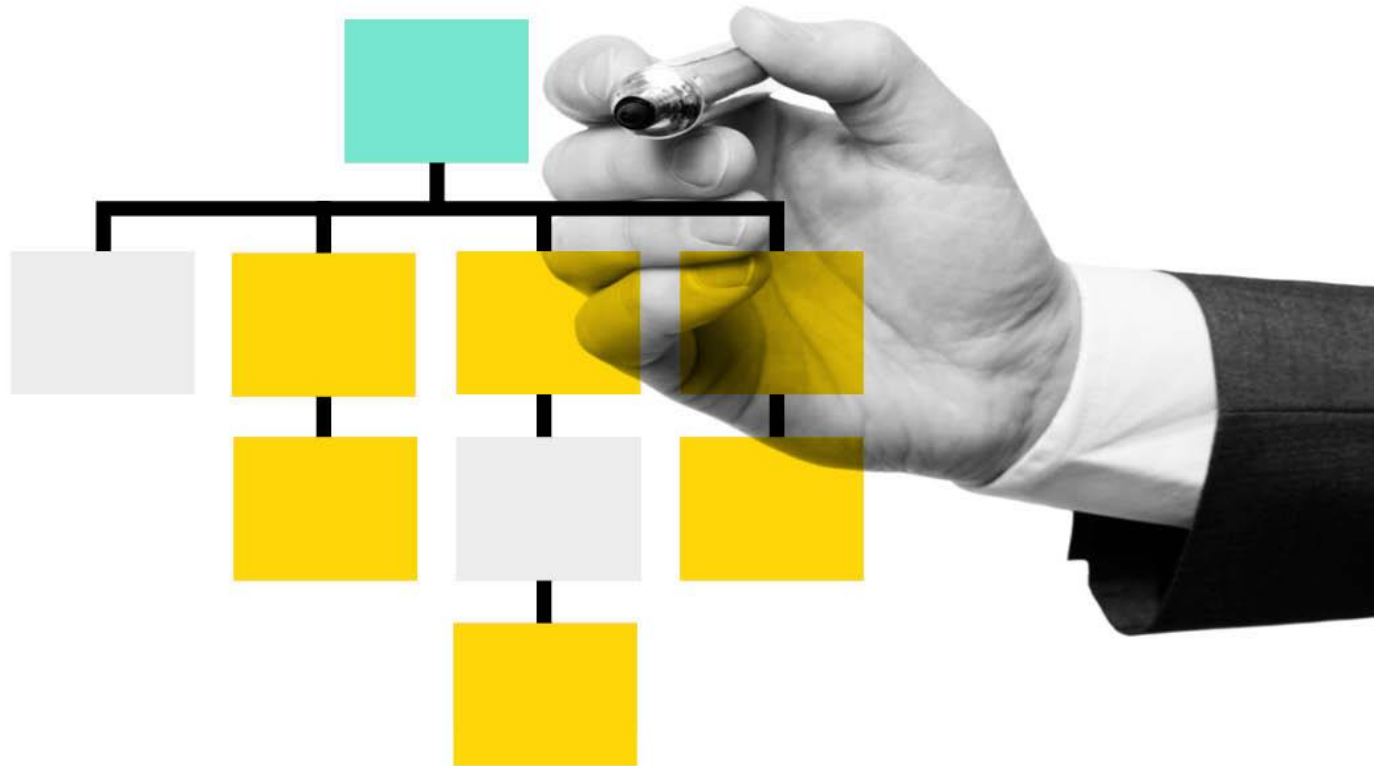
I. Company profile

II. Business

III. Reference

IV. Subcontractor







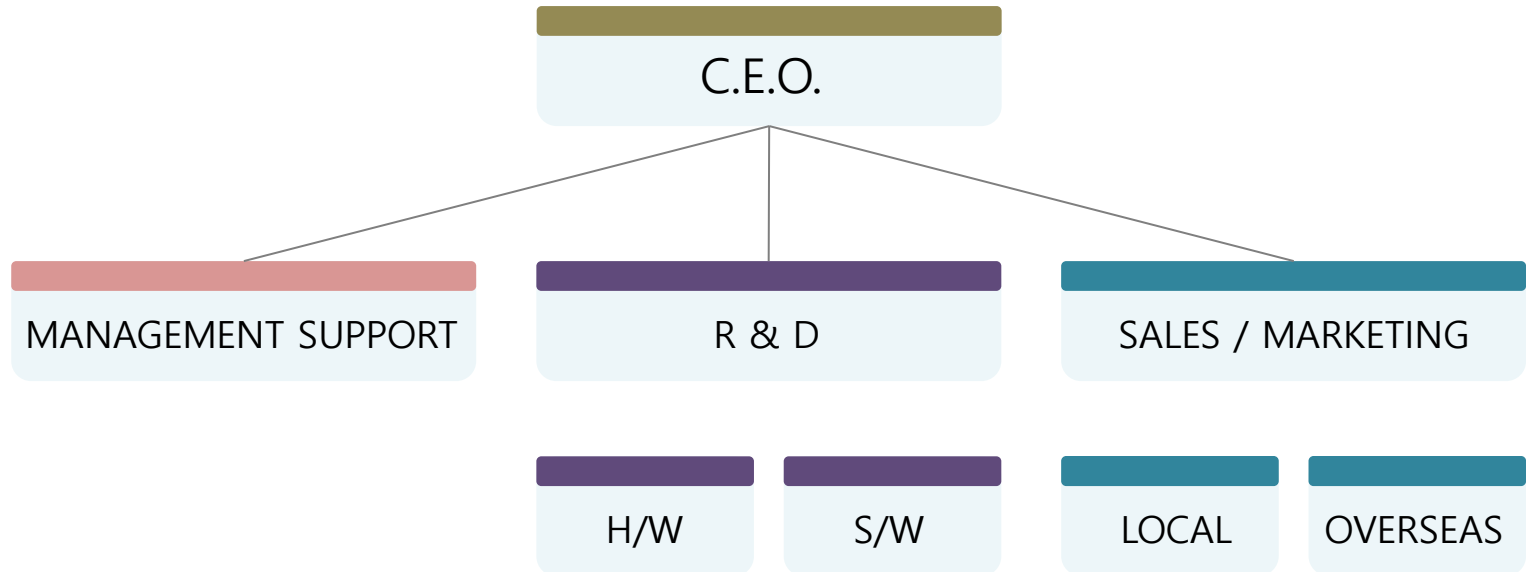
BECS Inc.

❖ C.E.O	Mr.Lee Kiseon
❖ Established	NOV.2010.
❖ Business	R&D for test & measurement system / Engineering consulting
❖ Location	Seoul, Korea
❖ Contact	TEL : +82-2-6274-0554 FAX : +82-2-6294-0554 WEB : www.becscorp.com



- Venture certification (No.20160400563)
- Research lab certification (No.2016111053)
- Promising export company certification (No.2018seoul-30)
- Hold own 11 Patents
- Registered product directly produced by Public Procurement Service: Cable tester (#4322264302)
- Selected as a pilot procurement project for technologically innovative products: Cable Waveform Analyzer

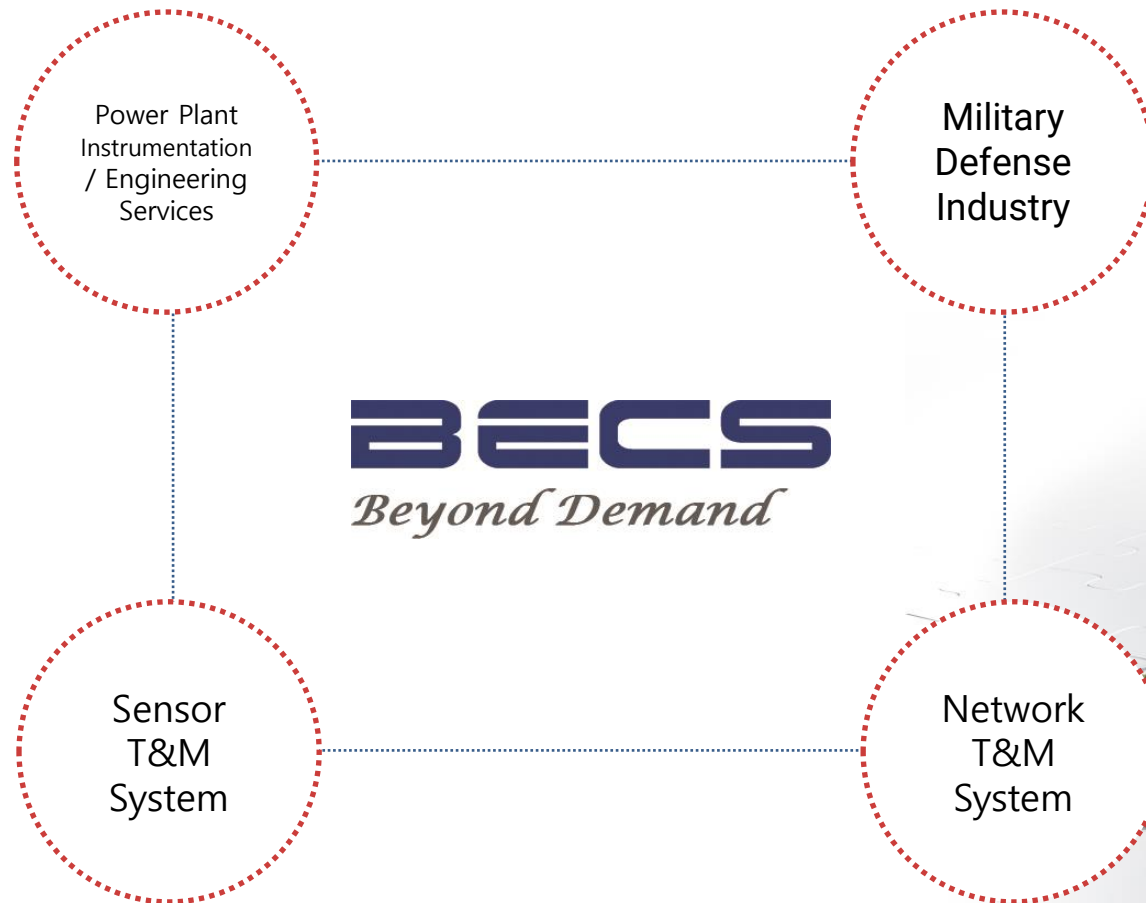
Structure of company

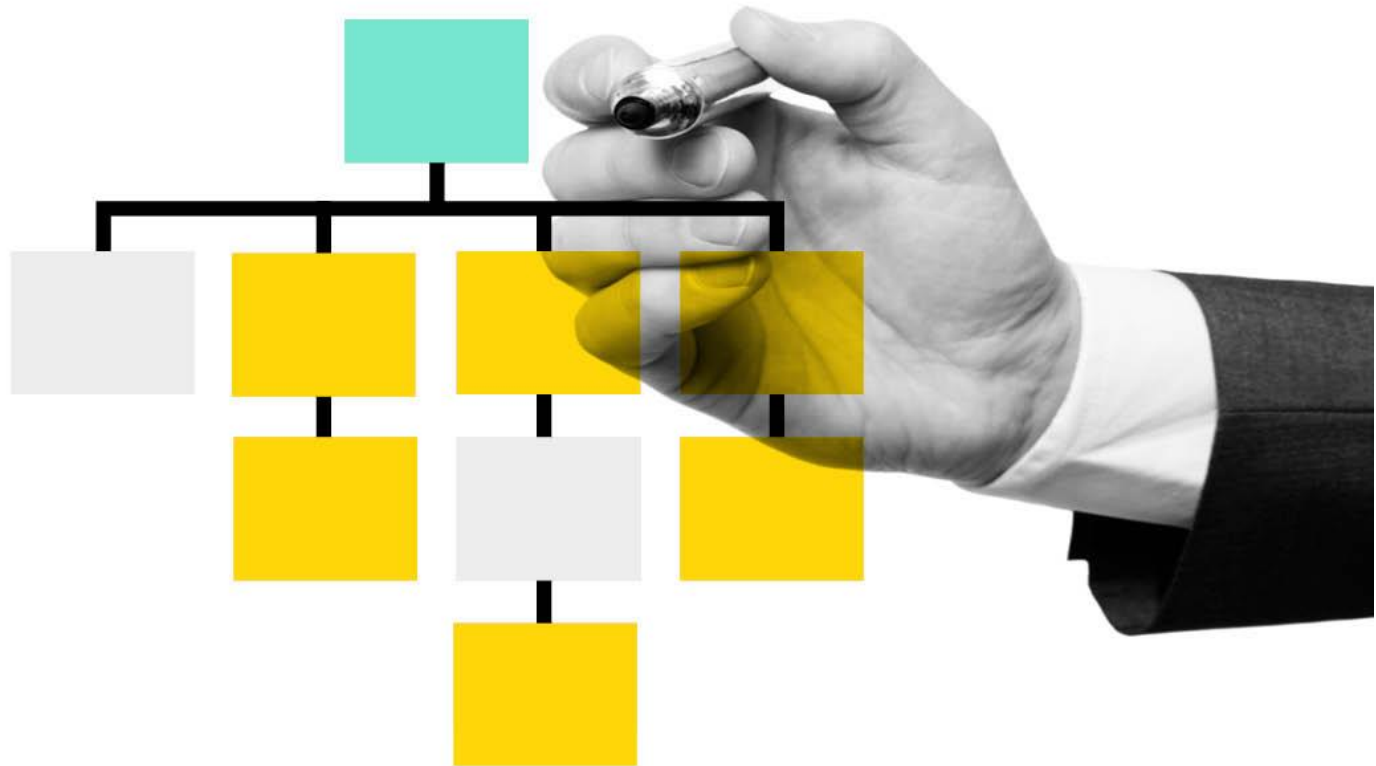


CUSTOMERS

Name	Related business	Website	Remarks
Korean Army	Internal communication line maintenance	https://www.mnd.go.kr/mbshome/mbbs/mndEN/	
Local government	Tunnel CCTV maintenance	http://www.isdc.co.kr/	
LS Cable	Cable theft protection	http://www.lscns.com/en/main.asp	
KOREA AEROSPACE INDUSTRIES, LTD	Fixed/rotary wing inner cables diagnostics	https://https://www.koreaaero.com/EN/	
Korea Hydro & Nuclear power	Multi cable line monitoring	http://www.khnp.co.kr/eng/main.do	
Atomic energy research institute	Power line maintenance	https://www.kaeri.re.kr/eng/	
Agency for defense development	Multi cable monitoring system	http://www.add.re.kr/eps	
Hyundai motor group	Fault location of smart factory power line	https://www.hyundaimotorgroup.com/	
Hyundai MOBIS	Fault location of automobile harness cable	https://en.mobis.co.kr/main/index.do	
Samsung electronics	Smart factory power line cable maintenance	https://www.samsung.com/sec/	
Samsung SDI	Pre-alert for automation production line	https://www.samsungsdi.com/index.html	
Korea Electric Power Corporation	Tunnel backfill detention	http://home.kepco.co.kr/kepco/EN/main.do	

We support our own know-how and best-in-field solutions
for years of testing and measurement





Power Plant Instrumentation / Engineering Services

We supply customized solutions that enable precise diagnosis/analysis in relation to various detectors and diagnostic systems used in power plants.

- Nuclear power plant measurement and control equipment localization
- System analysis of power plant measuring units



Military defense industry

To modernize the military defense industry, which can be said to be the foundation of national defense, we are conducting various preceding researches and localization work on the development of various electronic measurement systems and customized sensors.

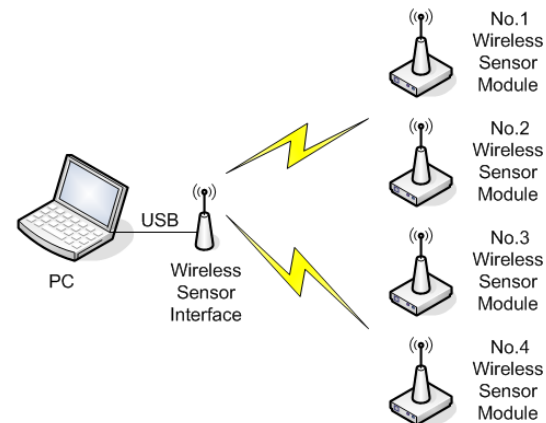
- TFDR system : Advanced cable diagnosis system
- Smart sensor / Lighting station



Sensor test and measurement system

High-speed precision measurement modules and wired / wireless communication devices and monitoring systems for connecting to a network system using a variety of sensors.

- Edge : low consumption T&M sensor module
- Feature : Optimize for IoT(internet of things)
- Application : Industrial equipment, Instrument for laboratory



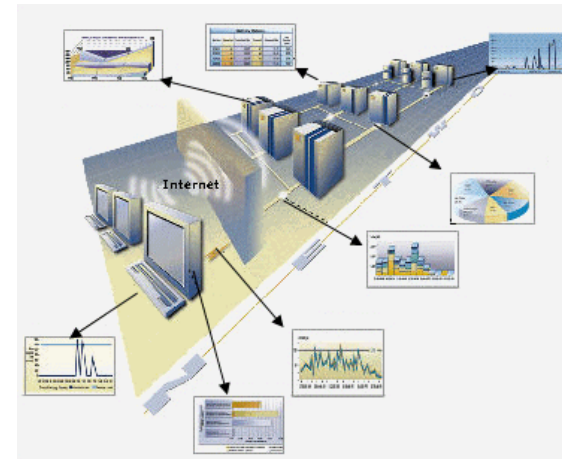
Cable/network test and measurement system

Development of Ethernet-based network equipment.

Development of physical defect measurement equipment for communication cables (LAN cables, coaxial cables, etc.).

Only manufacturer for own TDR(Time Domain Reflectometry) product in Korea.

- Edge : Network and user-friendly products connected to the new ICT world
- Feature : 100% Korea R&D with production
- Application : Equipment for network infra, Various industry for T&M



Research for OEM/ODM

We support our own know-how and best-in-field solutions for years of testing and measurement.

BECS research and development services: BOP [BECS ODM PROJECT] business.

- Edge : Custom design and development
- Feature : Unique Technology for H/W with S/W embedded collaboration
- Application : Electrical / Electronic products, T&M of embedded systems



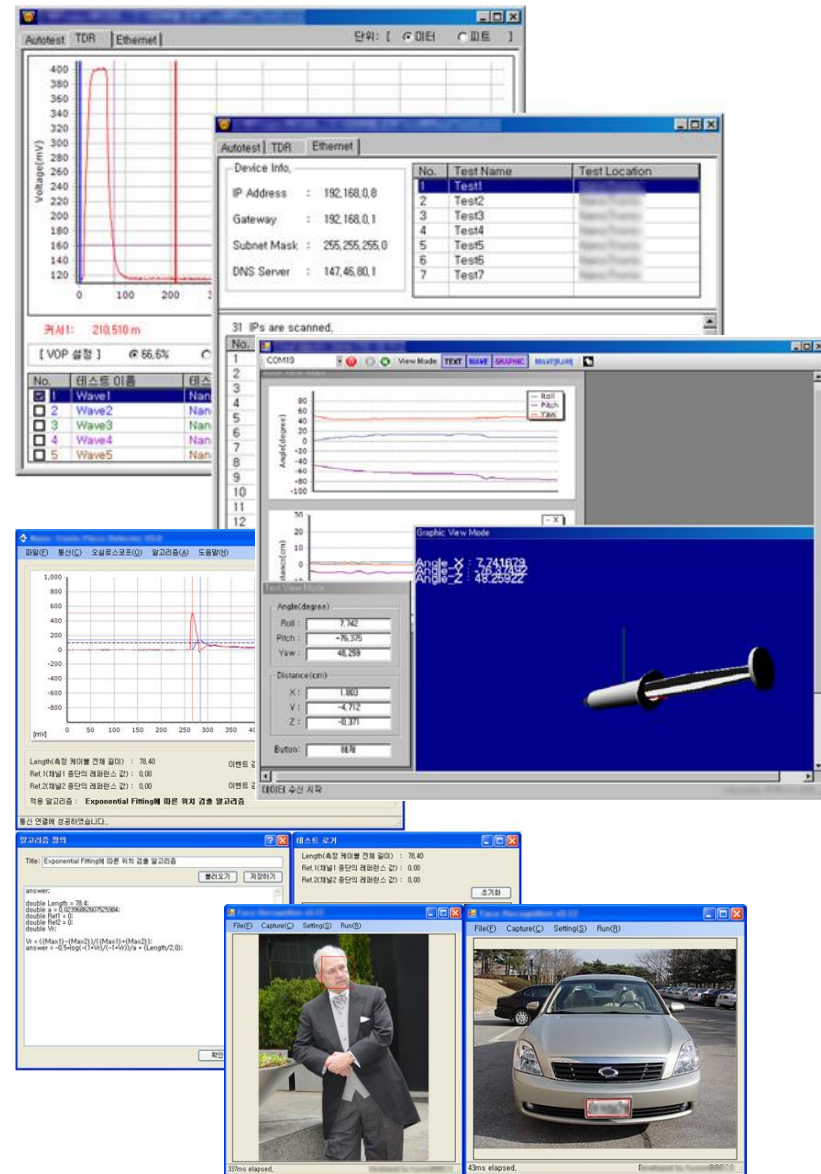
Own technology

H/W

1. High precision time measurement technology
2. High resolution waveform recovery
3. Fine signal measurement technology
4. Broadband TIA(Trans-Impedance Amplifier) design
5. Broadband amplifier design
6. High speed data acquisition
7. High speed data processing
8. High performance power supply design

S/W

1. Real-time event waveform detection
2. Design analysis algorithm
3. 3D modeling
4. DB linkage
5. Image identification



PRODUCT with REFERENCE



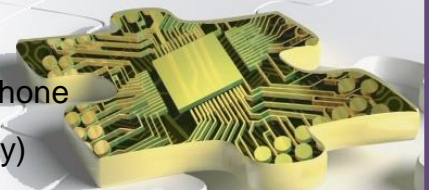
Industrial equipment # 1.

Handheld Network tester



Introduction

- Application : Network installation and maintenance with telephone line
- Main function :
 - 1) Line check (physically) : Line check for cable connection
 - Lan test include pair check
 - Cable connection check
 - 2) Ping test : Check the status of installed cable and operation
 - Real time test
 - IP address configure (STATIC/DHCP)
 - IEEE 802.3 compatibility
 - 3) Telephone line check : Test cord telephone line
 - Support CID
 - Push button for calling / Support speaker phone
- Key word : 2E1U (Economic / Efficiency / Unify)



Industrial equipment # 2.



Cable length meter

Numeric TDR (BTR1000)

- Overview : It offers a number of advantages for cable management (CATV, CCTV, power line, coaxial cable, and various devices, etc.)
This handheld device can find a cable fault (OPEN or SHORT) and display the distance position.
- Application : Telco, CATV, CCTV, Power plant, factories and etc.
- Range : 5.0m ~3,000m for Coaxial
- Resolution : 1cm
- Accuracy : $\pm 1\%$ of reading + 0.1m
- Repeatability : $\pm 0.3\%$ of reading
- V.O.P set : 1.0 % ~ 99.9% (in 0.1% step)
- Power : 2 AA type batteries
- Size : 63 * 140 * 30 mm (small / light weight)
- Certification : CE / KC

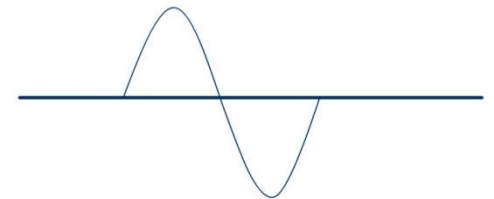
Industrial equipment # 3.



Waveform TDR

Waveform TDR (BTR5000)

- Applications: Power plant, Military, Telco, Automobile, Aviation, ETC.
- Range: 50cm ~ 20,000m / coaxial
- Resolution : 2.5 cm
- The two active cursors have separate controls
- The zero point can be changed
- Almost unlimited storage for waveform data via USB storage
- USB charging
- Available battery time display
- Waveform scaling function
- Waveform tracking and diagnostics
- Automatic Event Search
- Rugged packaging
- Certification : CE / KC / RoHS



Industrial equipment # 4.



High performance Waveform TDR

High Performance Waveform TDR (BTR7000)

- Introduction: A cable diagnostic equipment in the form of preventive diagnosis that can check the health condition rather than a simple post-diagnosis by detecting minute changes in the cable that existing equipment could not implement through high precision and resolution that could not be implemented in the existing BTR5000.
- Application : Aviation, Smart factory, Automobile, Ship, etc.
- Range: 10cm ~ 300m @ Coaxial
- Resolution : 0.5 mm (All range)
- Accuracy : ± 1 cm @ Coaxial
- Size : 300 x 249 x 120mm
- Waveform scaling function
- Waveform tracking and diagnostics
- Certification : CE / KC / RoHS

Other

Project	Contents
<ul style="list-style-type: none">• Optic power meter• Visual fault locator• CAN/MOST analyzer• Pipe line recording system• QC production line image recognition	<ul style="list-style-type: none">➤ Device for measuring the signal strength of a fiber optic cable➤ Apparatus for visually recognizing the advantages and fibers➤ CAN communication diagnostic equipment➤ The control box is developed and manufactured with a robot that can transmit image signals through the camera module for processing and control➤ Development and production of monitoring systems for camera images for injection molding machines to prevent damage

* Before ODM development, contract NDA for InfoSec

For monitoring system

Project	Contents
<ul style="list-style-type: none">• ESD monitoring• Pole cable line location monitoring• Smart Home control system• Pipe line damage remote monitoring system	<ul style="list-style-type: none">➤ Measure the static electricity via ESD sensor at production line, then it gather data from acquisition unit and transfer to PC control via wireless➤ Remote measure the vertical height of the line where installed in pole. To gather data and send to PC for analyzation➤ Temperature, humidity, and other indoor factors are measured, detected and control system that can be controlled by interlocking➤ A system that monitors and manages the pipeline defect in real time through TDR (TimeDomainReflectometry) (System Integration / low power consumption design)

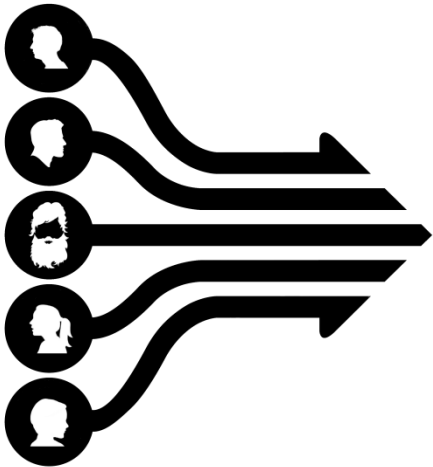
* Before ODM development, contract NDA for InfoSec

For laboratory

Project	Contents
<ul style="list-style-type: none">• Wireless 3D motion sensor system• Intravenous system (veterinary)	<ul style="list-style-type: none">➤ A system for measuring after the human body moves through the EMG changes of various wireless sensors (Wireless data transmission)➤ Motion analysis system, a 3D motion sensor based module (Injection behavior demonstration, transmission and analysis of data to PC via USB module)

* Before ODM development, contract NDA for InfoSec





Beyond Demand

Creating Value through Customer Satisfaction

THANKS!

Beyond demand | BECS Inc.

Unit 709, 14, Gasan digital 2-ro, Geumcheon-gu, Seoul, Korea (08592)
T +82-2-6274-0554 / F +82-2-6294-0554
sales@becscorp.co.kr
<http://www.becscorp.com/>